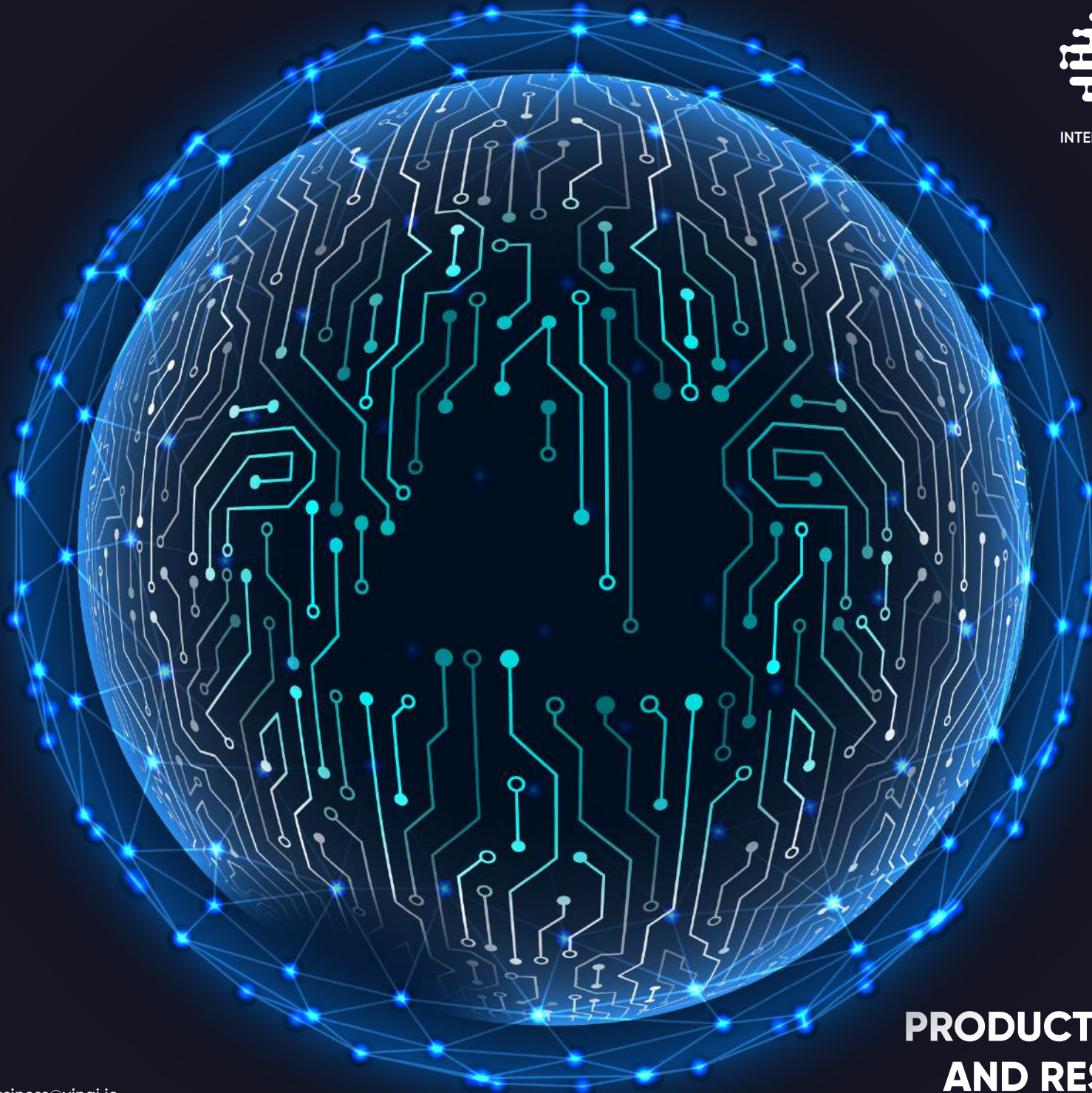





INTELLIGENCE FOR TOMORROW, TODAY



<https://www.vinai.io/>



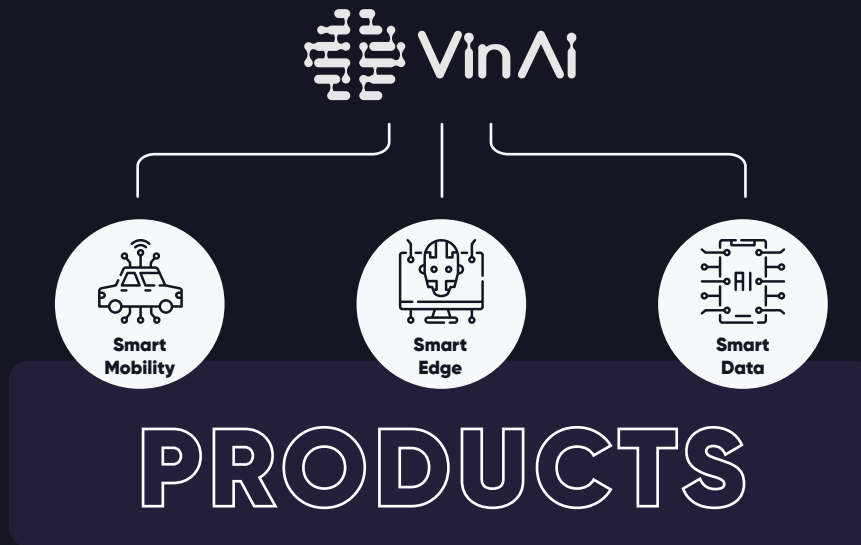
 business@vinai.io

**PRODUCT PORTFOLIO
AND RESEARCH LAB**

Democratize and bring AI to life

Established in 2019, VinAI is one of the world's top 25 AI research-based companies with a myriad of practical research projects. Headquartered in Hanoi (Vietnam), VinAI spans the globe with its tech hub presence in the United States and Australia. Bringing together 200 high-profile researchers and engineers, VinAI sets to transform its state-of-the-art AI research technology into products and services that solve real-world problems.

We are driven by a clear vision that delivers modern, impactful and comprehensive solutions, complemented by a stream of innovations from research.

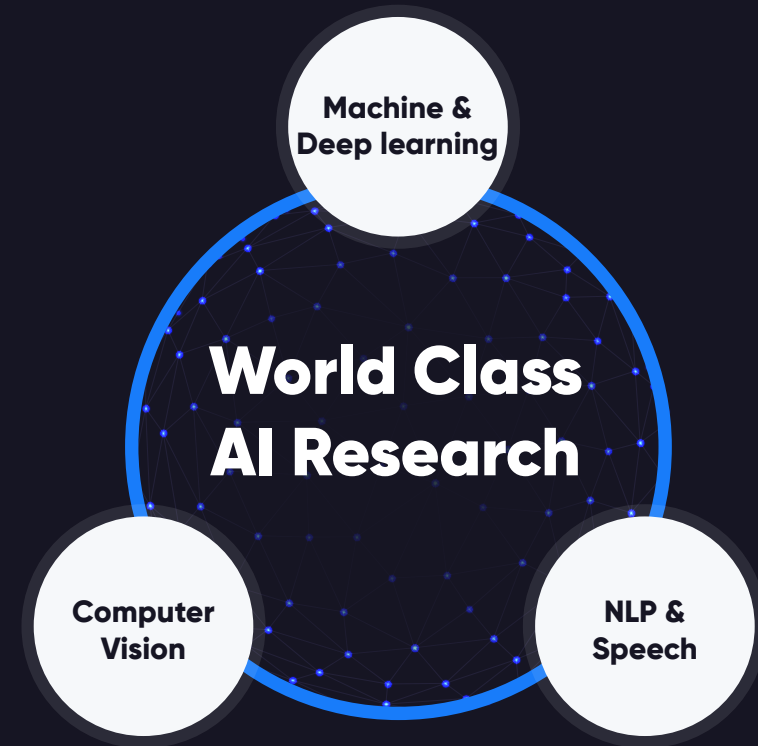


Our offices and Tech hubs

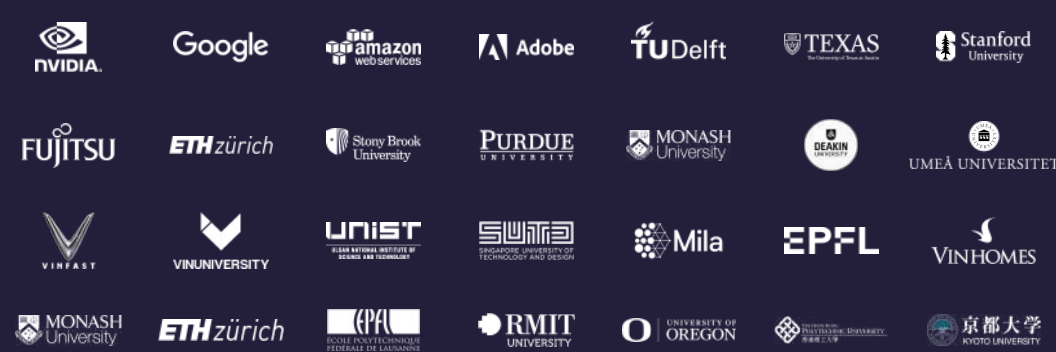


Our Research Lab

Focusing on Machine Learning, Computer Vision, and Natural Language Processing, our research aims to address fundamental problems in these areas and develop practical methods that enable impactful applications.



Our Global Collaborators



SMART MOBILITY

With our next-generation smart in-vehicle solution that combines in-car monitoring and surrounding sensory systems, we aim to transform the automotive industry by making driving safe and comfortable with AI.

DRIVER AND OCCUPANCY MONITORING SYSTEM

Keep your journey safe with our in-cabin solution, using high-performance cameras and AI to analyze driver behavior patterns to prevent driving errors.

Main features



Fatigue and Drowsiness Monitoring



Smoking Detection



Attentiveness Monitoring



Phone Usage Detection

Advanced Features



Car theft prevention



Occupant classification (child/pet/objects, left behind...)



Advanced behaviours and emotion recognition



Integration of automatic mirror adjustment, advanced AR HUD support, and voice assistant system



Driver health monitoring and alcohol detection

360 SURROUND VIEW MONITORING

Reinventing the occupants' experience by offering complete awareness of the situation around the car and identifying obstacles in "blind" areas.

Main Features



Front view, rear view with static and dynamic guideline
Top view with trajectory guideline



Auto on/off by changing gear, speed



Tire view



Safety warnings (from CAN message)



Touch-based 3D 360 surround view

Advanced Features



Narrow street measurement & guideline



Camera auto-calibration



Low light condition and bad weather support



Collision warning and unsafe door opening



Parking slot, free space detection, parking guideline



Transparent inside-out view

Why Us

- Highly accurate AI model: Rank 6th NIST 2020
- Adapted with multiple camera placement options (Steering Column, Instrument cluster, Center Stack)
- Multiple hardware platforms and SoCs support
- Continuous improvement of advanced AI models and features
- AI-enabled safety functions and enhanced driving experience
- Best-in-class image stitching quality, with high performance and low power consumption
- Flexible and portable on different platforms and systems, adapted for high-price range and low to mid-price range vehicles



SMART EDGE

Creates ultimate safety and availability for communities and businesses by transforming normal cameras into smart, cost-effective security systems with our advanced AI algorithms

Mature Features

Access-Care

- Access control
- Anti-spoofing face recognition algorithm for faces with and without masks

Retail-Care

- VIP recognition and returning customer identification
- Traffic heatmap and people counting
- Customer activity analysis

Advanced Features

Area-Care

- Multi-camera person re-identification and tracking
- Unattended object detection
- Anomaly detection
- Vehicle detection and license plate recognition

Process-Care

- Compliance analysis
- Efficiency evaluation and monitoring

SMART DATA

One-stop shop solution boosts data efficiency with full AI-lifecycle platform and services

Full life-cycle AI platform

Our AI-assisted smart platform speeds up development of data-centric AI products at an order of magnitude

Mature Features



Full AI lifecycle: data selection and annotation, model development, validation, deployment and monitoring



Off-the-Shelf datasets collections, data augmentation and synthesis*



Few-click parallel & distributed training, auto-hyperparameter tuning*



RESTful APIs, data security & privacy compliance



Efficient collaboration to share code & pipelines*

Advanced Features



ReneX: smart rapid model development and model refiner platform. Smart query and active learning to save annotation costs and accelerate performances*



Smart Visual Debugger to isolate corner cases, understand failure modes, poor label discovery



Robust model deployment with batch/real-time inference and system operation tracking*

Smart Data Annotation as a Service

With our AI technology and high-capacity team, we are changing the annotation game



35%

higher productivity compared to the industry leaders



30-40%

cost effectiveness compared to the global competitors



2 million+

annotated frames completed



1000+

annotators and ready to scale more

Why Us

- Supports many AI features including face recognition with a high level of accuracy
- Uses optimized AI algorithms for cost effective installation and operation
- Provides a full suite of deployment platforms
- Protects privacy and ensures compliance based on edge computing

- Portal management system for clients and annotators
- Advanced AI-assisted auto-labelling tools to significantly accelerate annotation
- Quality control with managed services
- AI to select the most valuable data to annotate**

*based on our internal benchmark exercises against one of the top global annotation services on 2DOD, 2D semantic-seg tasks
** progressing in the product roadmap